

StepGuard™

Protect your Molding Machine Investment & Your Plant Personnel



Eliminates Inadvertent Valve Damage

- Safely Service and Load Hopper
- Stop your people from climbing on machine
- Prevents damaging expensive machine components
- Easy service to Injection Unit
- Protects entire manifold & valves
- Easy installation
- Detaches from machine fast, using quick release pins

*Custom designed for your specific injection machine
or we may already have your specs!
(Allow 2 - 3 weeks for manufacturing)*

MODEL		PRICE
SG	StepGuard	INQUIRE

*Quantity discounts available - Inquire

To Order: Call and request a Special order form, complete the form with Size of Machine along with Model # and Serial #, and Fax back to us. We will call you back promptly with Pricing & Delivery

Requires drilling and anchoring to machine base.

SPECIFICATIONS

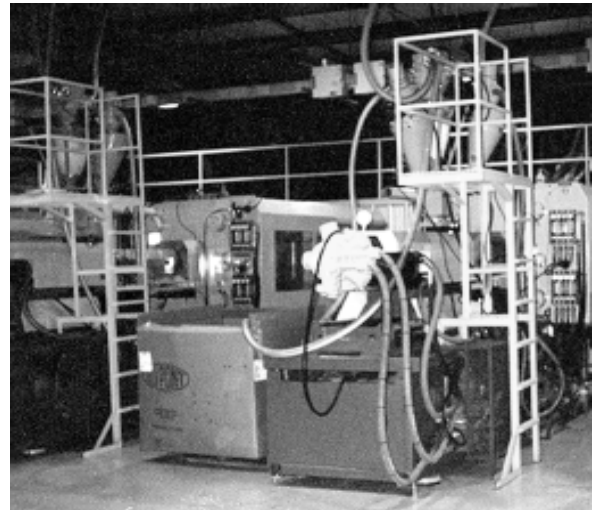
1" x 1" Square Tubing
6" C-channel construction
Painted OSHA Yellow

MATERIAL HANDLING STANDS

Create a much safer plant environment

- Enable Safe Hopper loading
- Let you Service Material Loaders & Dryers easily
- Eliminate using unsafe, flimsy ladders
- Stop your people from climbing on machine
- Prevent damaging expensive machine components
- Clean-up plant layout

*Custom Designed for your Specific Injection Machine
(Allow 3-4 weeks for manufacturing)*



PART #	PRESS SIZE RANGE	PRICE
MHS1	50 to 150 TON	INQUIRE
MHS2	160 to 300 TON	INQUIRE
MHS3	310 to 500 TON	INQUIRE
MHS4	OVER 500 TON	INQUIRE

To Order: Call for Order form, then complete form and fax back for Quote.
Quickly Bolts together.
Does require drilling machine base & plant floor.

SPECIFICATIONS

2" x 2" Angle Iron
1" x 1" Square Tubing
Painted OSHA Yellow

© 2009 MOLDERS CHOICE, Inc.



24 Hour Service - 7 Days a week

1-800-809-4623

WebSite: www.molderschoice.com

E-mail: molders@molderschoice.com