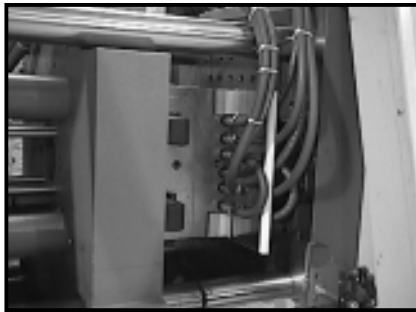


MOLD GUARD

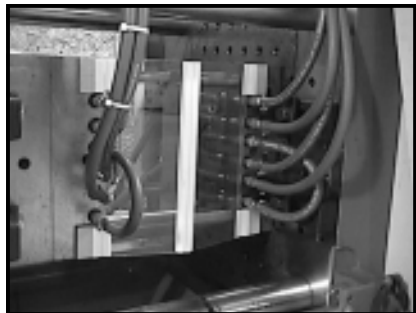
Reduces Scrap, Improves Quality, Enhances Plant Appearance

Another Parts Containment Solution from the Solution People!

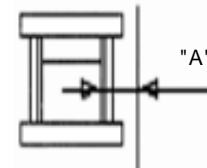
- Heavy duty solid polycarbonate
- Utilizes Polypropylene Living Hinges
- Powerful Magnets for Quick & Secure mountings



Mold Closed

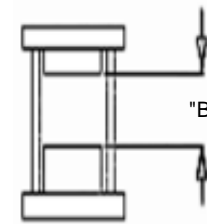


Mold Open



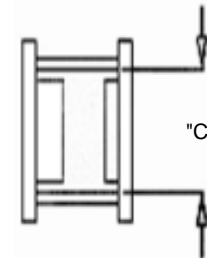
Top View
Mold Closed

"A" Dimension "A" is the required clearance from the edge of the mold to the machine guard.



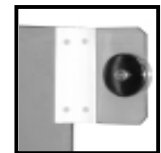
Top View
Mold Open

"B" Dimension "B" in the max mold open Dimensions measured between mold faces.



Side View
Mold Open

"C" Dimension "C" is the required clearance between the tie bars



Magnetic Mounting

PART #	Dim "A"	Dim "B"	Dim "C"	PRICES
MPB1-10	5-1/2"	9"	10"	\$128.00
MPB1-12	5-1/2"	9"	12"	\$128.00
MPB2-14	6-1/2"	12"	14"	\$148.00
MPB3-18	8-1/2"	16"	18"	\$175.00
MPB4-20	9-1/2"	18"	20"	\$185.00

Since every mold is unique, CUSTOM Sizes made to Order,
Please call or fax dimensions.

© 2009 MOLDERS CHOICE, Inc.



24 Hour Service - 7 Days a week
1-800-809-4623
 WebSite: www.molderschoice.com • Email: molders@molderschoice.com