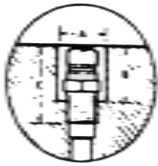


WATER LINE PLUGS

FLUSH MOUNTED



EXTERNALLY MOUNTED



Interchangeable with

- Jiffy-Tite
- Parker
- Foster
- Rectus (Obac)

MALE (brass)

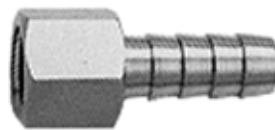
FEMALE (steel)

PART#	PRICE	NPT	Water pass	A	B	C	D
all dimensions in inches							
QC251	\$.37	1/8"	1/4"	11/16	11/16	1	5/8
QC252	\$.44	1/4"	1/4"	27/32	131/6	1-13/16	7/8
QC253	\$.48	3/8"	1/4"	1	15/16	1-1/4	27/32
QC352	\$.48	1/4"	3/8"	1	1-3/32	1-7/17	1-1/32
QC353	\$.48	3/8"	3/8"	1	1-1/8	1-3/16	1-1/16
QC354	\$.86	1/2"	3/8"	1-3/16	1-1/4	1-9/16	1-7/16
QC554	\$1.44	1/2"	5/8"	1-1/4	1-1/2	1-13/16	1-7/16
QC556	\$2.26	3/4"	5/8"	1-1/2	1-9/19	1-7/8	1-1/2

PART #	PRICE	NPT	Water pass	All plugs for use with coupling#
QC251F	\$.46	1/8"	1/4"	All 200 series
QC252F	\$.48	1/4"	1/4"	All 200 series
QC253F	\$.66	3/8"	1/4"	All 200 series
QC352F	\$.60	1/4"	3/8"	All 300 series
QC353F	\$.66	3/8"	3/8"	All 300 series
QC354F	\$1.60	1/2"	3/8"	All 300 series
QC554F	\$1.94	1/2"	5/8"	All 500 series
QC556F	\$2.91	3/4"	5/8"	All 500 series

All the above plugs are designed short, so they may be recessed below the mold surface to avoid damage during mold change or storage.

BARB TYPE FITTINGS



STANDARD MALE (Require hose clamps)			
PART#	PRICE	NPT (in)	Hose (in)
BM1	\$1.46	1/8	1/4
BM2	\$1.48	1/8	3/8
BM3	\$1.48	1/4	1/4
BM4	\$1.48	1/4	3/8
BM5	\$1.67	1/4	1/2
BM6	\$1.75	3/8	1/4
BM7	\$1.75	3/8	3/8
BM8	\$2.00	3/8	1/2
BM9	\$2.13	1/2	3/8
BM10	\$2.20	1/2	1/2
BM11	\$2.16	1/2	3/8
BM12	\$2.89	1/2	3/4
BM13	\$4.30	1	1
BM14	\$3.25	3/4	3/4
BM15	\$3.04	3/4	1
BM16	\$4.30	1	3/4
BM17	\$4.50	3/4	1/2

PUSH-ON STYLE (No clamps required)			
PART#	PRICE	NPT (in)	Hose (in)
PBM1	\$1.75	1/4	1/4
PBM2	\$1.75	1/4	3/8
PBM3	\$1.94	3/8	3/8
PBM4	\$2.16	1/2	3/8
PBM5	\$1.94	3/8	1/2
PBM6	\$1.95	1/4	1/2
PBM7	\$2.25	1/2	1/2
PBM8	\$3.20	1/2	3/4
PBM9	\$1.55	1/8	1/4

STANDARD FEMALE (Require hose clamps)			
PART#	PRICE	NPT (in)	Hose (in)
BF1	\$ 1.50	1/4	1/4
BF2	\$ 1.50	1/4	3/8
BF3	\$ 1.83	3/8	3/8
BF4	\$ 1.88	3/8	1/2
BF5	\$ 2.19	1/2	1/2

PUSH-ON STYLE			
PART#	PRICE	NPT (in)	Hose (in)
PBF1	\$.72	1/4	1/4
PBF2	\$1.13	3/8	3/8
PBF3	\$1.79	1/2	1/2

HOSE SPLICE (push-on style)		
PART#	PRICE	NPT
PBS1	\$1.48	1/4
PBS2	\$1.72	3/8
PBS3	\$1.98	1/2

SPARE VITON WASHERS	
PART#	PRICE
VW200	\$.80 ea.
VW300	\$.95 ea.
VW500	\$1.00 ea.

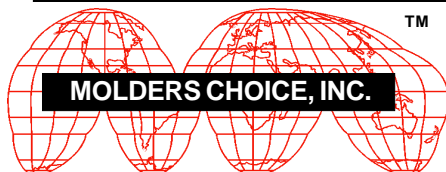
THREAD SEALANT TAPE

- Low cost
- Seals against water, oil, gas, air leakage

PART#	WxL	MILL	PRICE
TST520	1/2" x 520"	3.5	\$.95 each



© 2009 MOLDERS CHOICE, Inc.



24 Hour Service - 7 Days a week
1-800-809-4623
 WebSite: www.molderschoice.com E-mail: molders@molderschoice.com