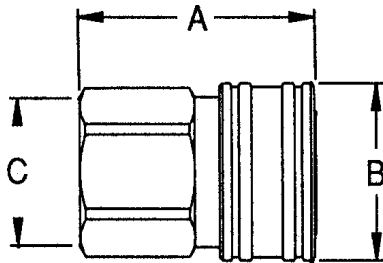


ST-SERIES COUPLERS & PLUGS

Sockets – Female End Connections

Brass, without Shut-Off Valves



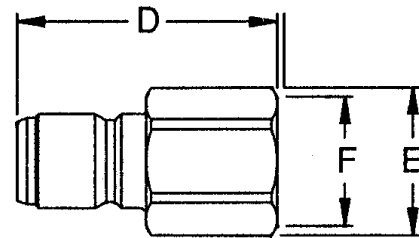
C = Across Flats

PART #	FEMALE THRD SIZE	DIMENSIONS (INCHES)			PRICES
		A	B	C	
1-S11	1/8" NPT	1.06	0.69	0.50	\$5.00
2-S16	1/4" NPT	1.50	0.94	0.81	\$5.38
3-S21	3/8" NPT	1.59	1.13	1.00	\$6.00
4-S26	1/2" NPT	1.91	1.31	1.13	\$7.39
6-S31	3/4" NPT	2.06	1.69	1.44	\$14.10
8-S36	1" NPT	2.31	2.00	1.75	\$15.50
10-S41	1-1/4" NPT	2.44	2.50	2.00	\$49.50
12-S46	1-1/2" NPT	2.88	3.13	2.56	\$50.00
16-S51	2" NPT	3.09	3.75	3.00	\$96.50
20-S56	2-1/2" NPT	3.44	4.50	3.50	\$100.00

PART #	FEMALE THRD SIZE	DIMENSIONS (INCHES)			PRICES
		D	E	F	
B1-T11	1/8" NPT	1.00	0.57	0.50	\$3.29
B2-T16	1/4" NPT	1.50	0.80	0.69	\$3.85
B3-T21	3/8" NPT	1.63	0.94	0.81	\$4.00
B4-T26	1/2" NPT	1.94	1.16	1.00	\$4.50
B6-T31	3/4" NPT	2.06	1.39	1.19	\$6.30
B8-T36	1" NPT	2.25	1.81	1.56	\$9.00
B10-T41	1-1/4" NPT	2.34	2.31	2.00	\$17.00
B12-T46	1-1/2" NPT	2.88	2.59	2.25	\$26.50
B16-T51	2" NPT	3.03	3.17	2.75	\$50.50
B20-T56	2-1/2" NPT	3.37	3.75	3.25	\$52.50

Plugs – Female End Connections

Brass, without Shut-Off Valves

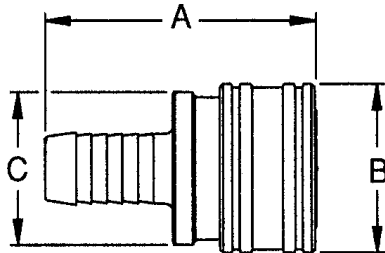


F = Across Flats

E = Across Corners

Sockets – Hose Stem Connections

Brass, without Shut-Off Valves



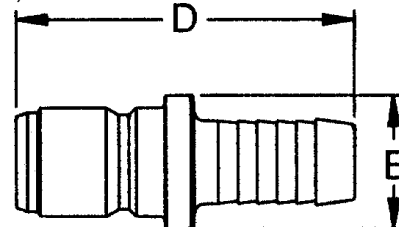
C = Across Flats

PART #	HOSE SIZE	DIMENSIONS (INCHES)			PRICES
		A	B	C	
1-S12	3/16" HS	1.41	0.69	0.50	\$6.00
1-S17	1/4" HS	1.41	0.69	0.50	\$6.00
2-S17	1/4" HS	2.13	0.94	0.88	\$7.00
3-S22	3/8" HS	2.31	1.13	1.06	\$7.15
4-S27	1/2" HS	2.66	1.31	1.19	\$9.10
6-S32	3/4" HS	2.81	1.63	1.50	\$12.10
8-S37	1" HS	2.94	2.00	1.81	\$24.50

PART #	HOSE SIZE	DIMENSIONS (INCHES)		PRICES
		D	E	
B1-T12	3/16" HS	1.31	0.44	\$5.00
B1-T17	1/4" HS	1.31	0.44	\$6.25
B2-T17	1/4" HS	1.98	0.56	\$6.75
B3-T22	3/8" HS	2.31	0.69	\$7.00
B4-T27	1/2" HS	2.66	0.88	\$7.10
B6-T32	3/4" HS	2.84	1.19	\$8.80
B8-T37	1" HS	2.94	1.50	\$16.00

Plugs – Hose Stem Connections

Brass, without Shut-Off Valves



©2009 MOLDERS CHOICE, Inc.



24 Hour Service - 7 Days a week

1-800-809-4623

WebSite: www.molderschoice.com • Email: molders@molderschoice.com