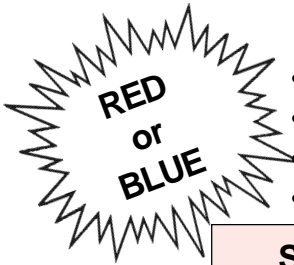


STEEL WATER MANIFOLDS

The only steel manifolds color coded for hot and cold plumbing

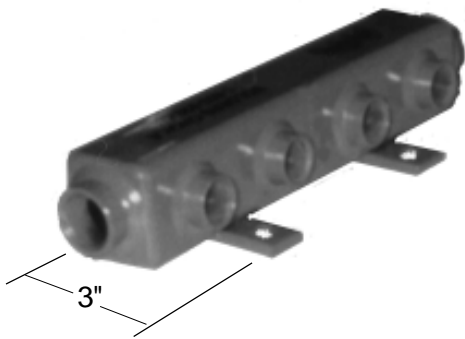
LOW COST - ECONOMY MODELS



- High quality, robotically welded steel
- Pressure tested by Air @100 psi
- High visibility Red or Blue
- Compact mounting

- 2 Styles available: Straight or Split
- 2" x 2" Steel tubing
- 3/4" NPT Inlet/Outlet main supply
- 1/2" NPT Inlet/Outlet mold supply ports (2-1/2" between centers)

Straight Through



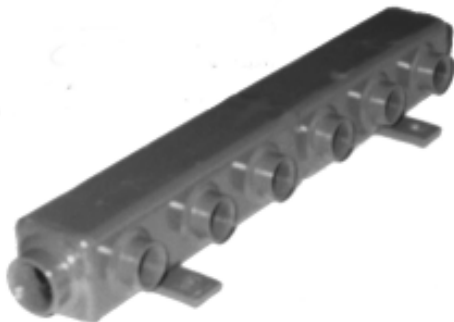
4 Port
Part # ST4
\$40.00
 OAL: 14"
 Add "B" (Blue) or "R" (Red) after part number

Split In/Out

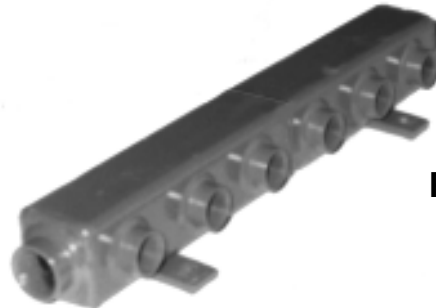
RED and BLUE



4 Port
 (2 in - 2 out)
Part # SP422
\$47.00
 OAL: 14"



6 Port
Part # ST6
\$47.00
 OAL: 20"
 Add "B" (Blue) or "R" (Red) after part number



6 Port
 (3 in - 3 out)
Part # SP633
\$55.00
 OAL: 20"



8 Port
Part # ST8
\$59.00
 OAL: 26"
 Add "B" (Blue) or "R" (Red) after part number



8 Port
 (4 in - 4 out)
Part # SPL844
\$63.00
 OAL: 26"



© 2009 MOLDERS CHOICE, Inc.

24 Hour Service - 7 Days a week
1-800-809-4623
 WebSite: www.molderschoice.com • Email: molders@molderschoice.com