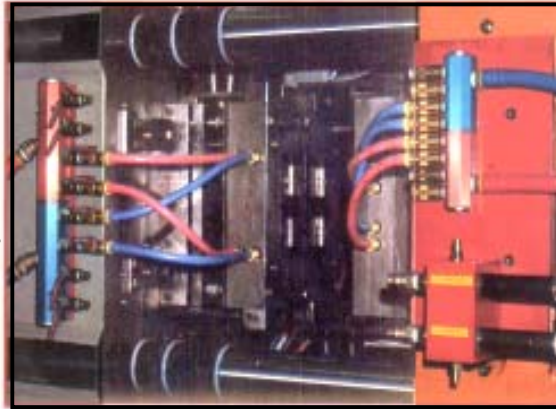


COLOR CODED, QUICK-CHANGE ALUMINUM MANIFOLDS

Full flow for optimum cooling

- Pre-plumbed molds reduce set-up time, eliminate connection errors
- Low profile
- Can be equipped with quick-change connectors for fast mold changes
- Anodizing treatment inhibits corrosion



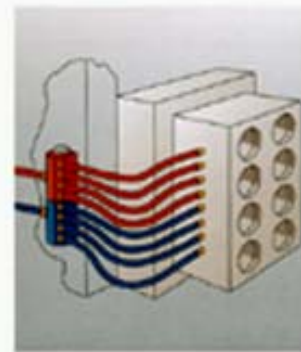
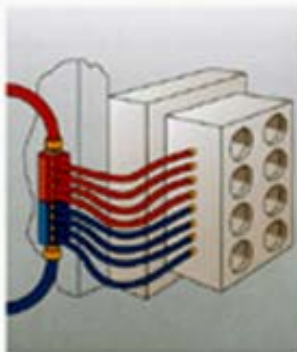
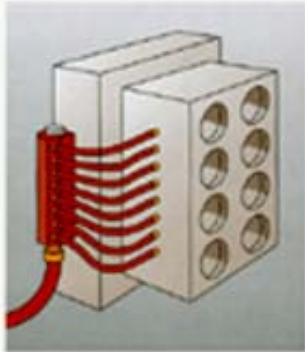
- Color coded manifolds
Blue for Cold, Red for Hot
- Rugged design, field tested in hundreds of plants.
- 3 Volume sizes available
3/4", 1" & 1-1/2"
- Pressure rates:
3000 psi @ 300° F
(200 psi On Inline & Sideline Divided Only)

The advantage of mold mounting, color coding and quick connect fittings can be readily seen above, a typical application of INLINE manifolds.



TYPICAL MANIFOLD MOUNTING CONFIGURATIONS

Examples shown here are only a few of the large number of possible mounting arrangements.



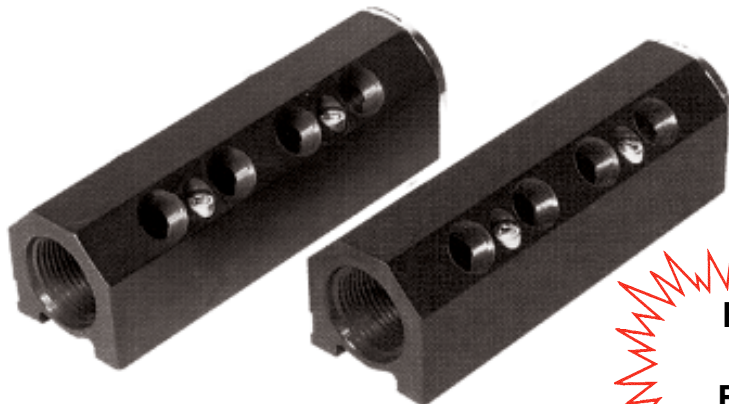
© 2009 MOLDERS CHOICE, Inc.

24 Hour Service - 7 Days a week
1-800-809-4623
 WebSite: www.molderschoice.com • Email: modlers@molderschoice.com

COLOR CODED QUICK-CHANGE ALUMINUM MANIFOLDS

3 Models to choose from . . . Inline, Divided, Sideline
3 Volume Sizes to choose from . . . 3/4", 1" or 1-1/2" inlets available

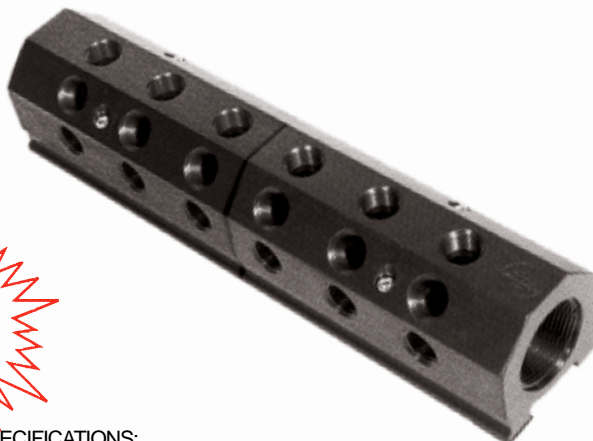
THE IN LINE MODEL (either end, "IN", or "OUT")



SPECIFICATIONS:
MANIFOLD LENGTHS: From 2-3/4" to 18" long
NUMBER OF PORTS: Up to 8 on any one side of 5 sides
INLET PORT SIZE: 3/4", 1", or 1-1/2"
OUTLET PORT SIZE: With 3/4" supply/return: 1/8", or 1/4"
 With 1" supply/return: 1/4", or 3/8"
 With 1-1/2", supply/return: 3/8", 1/2"

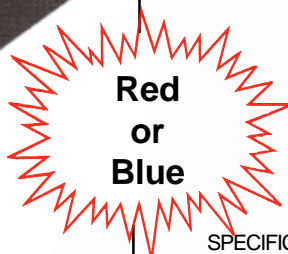
Pressure Rating: 3000 psi @ 300° F

The INLINE DIVIDED Model (provides an IN and an OUT supply port)



SPECIFICATIONS:
MANIFOLD LENGTHS: From 2-3/4" to 18" long
NUMBER OF PORTS: Up to 8 on any one side of 5 sides
INLET AND OUTLET PORT SIZE: (In one end, out other end)
 3/4", 1", or 1-1/2"
OUTLET PORT SIZE: With 3/4" supply/return: 1/8", or 1/4"
 (to/from mold) With 1" supply/return: 1/4", or 3/8"
 With 1-1/2", supply/return: 3/8", 1/2" or 3/4"

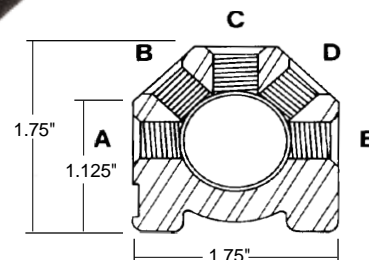
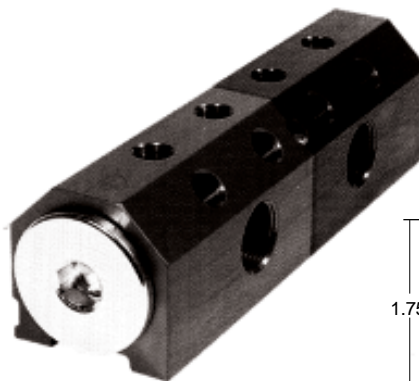
Pressure Rating: 200 psi @ 300° F



THE SIDELINE DIVIDED MODEL (provides an "IN" and an "OUT" supply port on side "E")

SPECIFICATIONS:
MANIFOLD LENGTHS: 5-1/4", 6-1/4", or 10-1/2" long
NUMBER OF PORTS: Up to 8 on any one side of 4 sides
 (outlet ports, to mold, are on sides "A", "B", "C", "D" and "OUT" water line ports are on side "E")
INLET AND OUTLET PORT SIZE: 3/4", 1", or 1-1/2"
OUTLET PORT SIZE: With 3/4" supply/return: 1/8", or 1/4"
 (to/from mold) With 1" supply/return: 1/4", or 3/8"
 With 1-1/2", supply/return: 3/8", or 1/2"

Pressure Rating: 200 psi @ 300° F



HOW TO ORDER:

- 1.) Select Inlet Size: 3/4" : 3
 1" : 4
 1-1/2" : 6

- 2.) Overall length
 3/4" 1" 1-1/2"
 2.750" : 2 3.750" : 4 6" : 6
 4.750" : 4 6.250" : 6 10" : 10
 6.750" : 6 8.750" : 9 14" : 14
 8.750" : 8 11.25" : 11 18" : 18

Part Number Code

- 3.) Outlet port location:
 Blue
 or Red

- 4.) Total Number of Outlets:

- 5.) Outlet Sizes:
 1/8", 1/4", 3/8", 1/2" or 3/4"



© 2009 MOLDERS CHOICE, Inc.

24 Hour Service - 7 Days a week
1-800-809-4623
 WebSite: www.molderschoice.com • Email: molders@molderschoice.com

3/4" INLINE MANIFOLDS

IM3-2-AB-4 1/8" OR 1/4" \$43.00	IM3-2-BD-4 1/8" OR 1/4" \$43.00	IM3-2-BCD-6 1/8" OR 1/4" \$48.00	IM3-2-ABC-6 1/8" OR 1/4" \$49.00	IM3-2-BD-2-2 1/8" OR 1/4" \$59.00	IM3-2-ABCDE-5-5 1/8" \$77.00
IM3-4-B-4 1/8" OR 1/4" \$53.00	IM3-4-BC-8 1/8" OR 1/4" \$65.00	IM3-4-BD-8 1/8" OR 1/4" \$65.00	IM3-4-ABC-12 1/8" OR 1/4" \$77.00	IM3-4-BD-4-4 1/8" OR 1/4" \$81.00	IM3-4-ABC-6-6 1/8" OR 1/4" \$93.00
IM3-6-B-6 1/8" OR 1/4" \$69.00	IM3-6-BC-12 1/8" OR 1/4" \$87.00	IM3-6-BD-12 1/8" OR 1/4" \$87.00	IM3-6-ABC-18 1/8" OR 1/4" \$105.00	IM3-6-BD-6-6 1/8" OR 1/4" \$103.00	IM3-6-ABC-9-9 1/8" OR 1/4" \$121.00
IM3-8-B-8 1/8" OR 1/4" \$85.00	IM3-8-C-8 1/8" OR 1/4" \$85.00	IM3-8-BD-16 1/8" OR 1/4" \$109.00	IM3-8-BD-8-8 1/8" OR 1/4" \$125.00	<p>LENGTH 2.75" 4.75" 6.75" OR 8.75"</p>	

Price includes end cap and stainless steel 10-32 x 1-1/2" mounting screws.
CUSTOM MANIFOLDS QUOTED UPON REQUEST

© 2009 MOLDERS CHOICE, Inc.



24 Hour Service - 7 Days a week
1-800-809-4623
 WebSite: www.molderschoice.com • Email: molders@molderschoice.com

1" INLINE MANIFOLDS

IM4-4-AB-4 1/4" OR 3/8" \$56.00	IM4-4-BD-4 1/4" OR 3/8" \$56.00	IM4-4-BCD-6 1/4" OR 3/8" \$62.00	IM4-4-ABC-6 1/4" OR 3/8" \$62.00	IM4-4-BD-2-2 1/4" OR 3/8" \$73.00	IM4-4-ABCDE-5-5 1/4" \$91.00
IM4-6-B-4 1/4" OR 3/8" \$74.00	IM4-6-BC-8 1/4" OR 3/8" \$96.00	IM4-6-BD-8 1/4" OR 3/8" \$86.00	IM4-6-ABC-12 1/4" OR 3/8" \$98.00	IM4-6-BD-4-4 1/4" OR 3/8" \$103.00	IM4-6-ABC-6-6 1/4" OR 3/8" \$115.00
IM4-9-B-6 1/4" OR 3/8" \$92.00	IM4-9-BC-12 1/4" OR 3/8" \$110.00	IM4-9-BD-12 1/4" OR 3/8" \$110.00	IM4-9-ABC-18 1/4" OR 3/8" \$128.00	IM4-9-BD-6-6 1/4" OR 3/8" \$127.00	IM4-9-ABC-9-9 1/4" OR 3/8" \$145.00
IM4-11-B-8 1/4" OR 3/8" \$116.00	IM4-11-C-8 1/4" OR 3/8" \$116.00	IM4-11-BD-16 1/4" OR 3/8" \$140.00	IM4-11-BD-8-8 1/4" OR 3/8" \$157.00	LENGTH 3.75" 6.25" 8.75" 11.25" OR SPECIAL	

Price includes end cap and stainless steel 1/4"-20 x 2" mounting screws

CUSTOM MANIFOLDS QUOTED UPON REQUEST

$\varnothing 1.100"$
 1" Pipe Thread
 1.0" 1.44" 2.0"
 -1.5" -2.0"
 For 1/4" x 2" Long STLS Mounting Screws

© 2009 MOLDERS CHOICE, Inc.



24 Hour Service - 7 Days a week

1-800-809-4623

WebSite: www.molderschoice.com • Email: molders@molderschoice.com

1-1/2" INLINE MANIFOLDS

Model	Port Configuration	Port Size	Price
IM6-6-AB-4	4 ports (A, B)	3/8" OR 1/2"	\$83.00
IM6-6-BD-4	4 ports (B, D)	3/8" OR 1/2"	\$83.00
IM6-6-BCD-6	6 ports (B, C, D)	3/8" OR 1/2"	\$91.00
IM6-6-ABC-6	6 ports (A, B, C)	3/8" OR 1/2"	\$91.00
IM6-6-BD-2-2	2 ports (B, D) + 2 ports (A, C)	3/8" OR 1/2"	\$103.00
IM6-6-ABCDE-5-5	5 ports (A, B, C, D, E)	3/8" OR 1/2"	\$127.00
IM6-10-B-4	4 ports (B)	3/8" OR 1/2"	\$111.00
IM6-10-BC-8	8 ports (B, C)	3/8" OR 1/2"	\$127.00
IM6-10-BD-8	8 ports (B, D)	3/8" OR 1/2"	\$127.00
IM6-10-ABC-12	12 ports (A, B, C)	3/8" OR 1/2"	\$143.00
IM6-10-BD-4-4	4 ports (B, D) + 4 ports (A, C)	3/8" OR 1/2"	\$147.00
IM6-10-ABC-6-6	6 ports (A, B, C) + 6 ports (D, E, F)	3/8" OR 1/2"	\$163.00
IM6-14-B-8	8 ports (B)	3/8" OR 1/2"	\$147.00
IM6-14-BC-12	12 ports (B, C)	3/8" OR 1/2"	\$171.00
IM6-14-BD-12	12 ports (B, D)	3/8" OR 1/2"	\$171.00
IM6-14-ABC-18	18 ports (A, B, C)	3/8" OR 1/2"	\$195.00
IM6-14-BD-6-6	6 ports (B, D) + 6 ports (A, C)	3/8" OR 1/2"	\$191.00
IM6-14-ABC-9-9	9 ports (A, B, C) + 9 ports (D, E, F)	3/8" OR 1/2"	\$215.00
IM6-18-B-8	8 ports (B)	3/8" OR 1/2"	\$183.00
IM6-18-C-8	8 ports (C)	3/8" OR 1/2"	\$183.00
IM6-18-BD-16	16 ports (B, D)	3/8" OR 1/2"	\$215.00
IM6-18-ABC-12-12	12 ports (A, B, C) + 12 ports (D, E, F)	3/8" OR 1/2"	\$267.00

Price includes end cap and stainless steel 1/4"-20 x 2-1/2" mounting screws
CUSTOM MANIFOLDS QUOTED UPON REQUEST

Technical drawing details:
 - Thread: 1-1/2" Thread
 - Hole diameter: Ø1.7434
 - Mounting hole diameter: Ø.251
 - Mounting hole offset: 1.5" and 2.0" from ends
 - Mounting hole diameter: 3.0" (for 1/4"-20 x 2-1/2" long mounting screws)

Manifold length options: 6.0", 10.0", 14.0", OR 18.0"

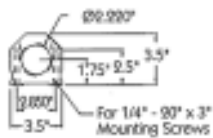
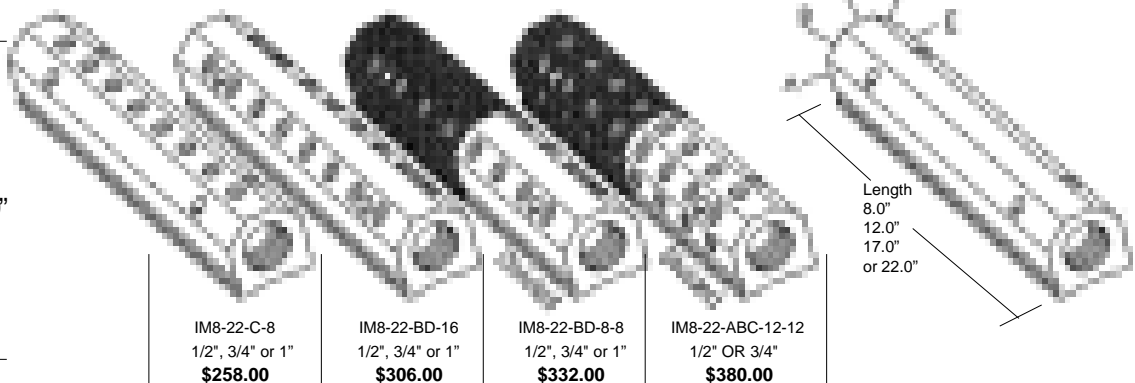
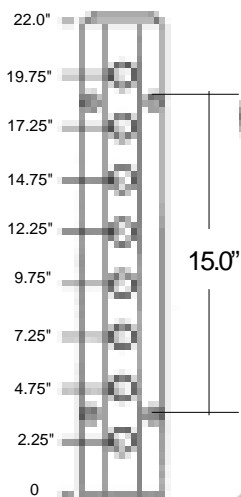
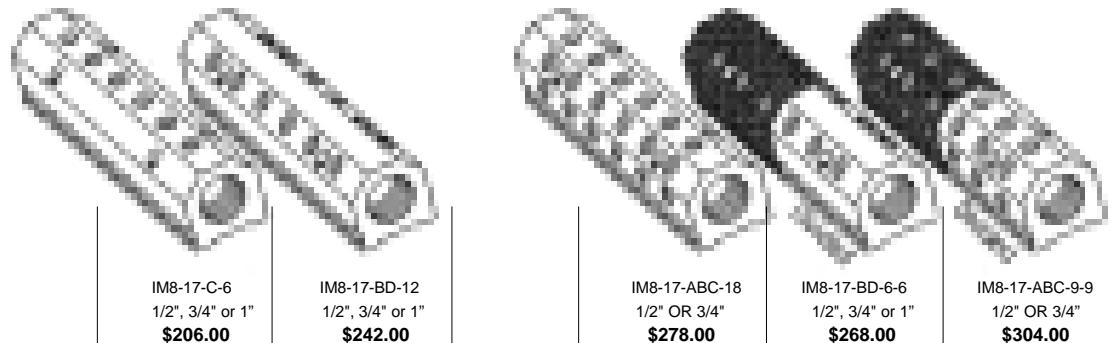
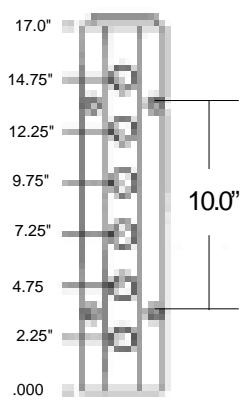
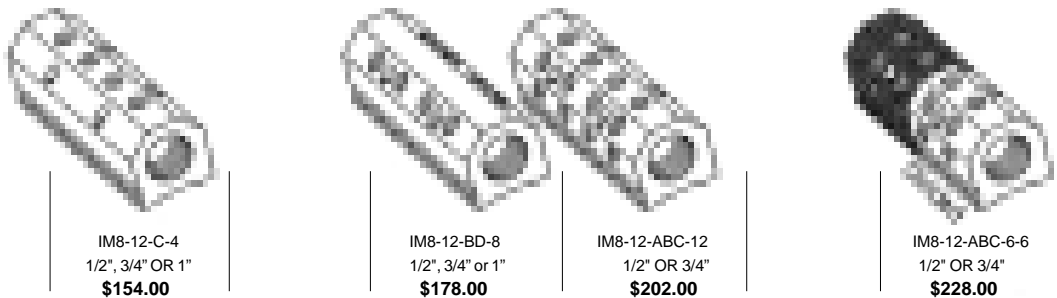
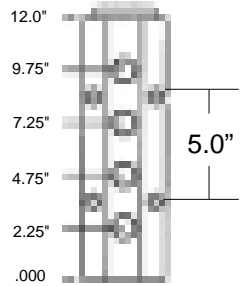
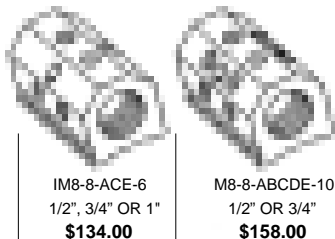
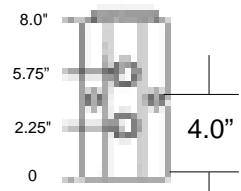
Port configurations: BLUE, RED, DIVIDED

© 2009 MOLDERS CHOICE, Inc.



24 Hour Service - 7 Days a week
1-800-809-4623
 WebSite: www.molderschoice.com • Email: molders@molderschoice.com

2" INLINE MANIFOLDS



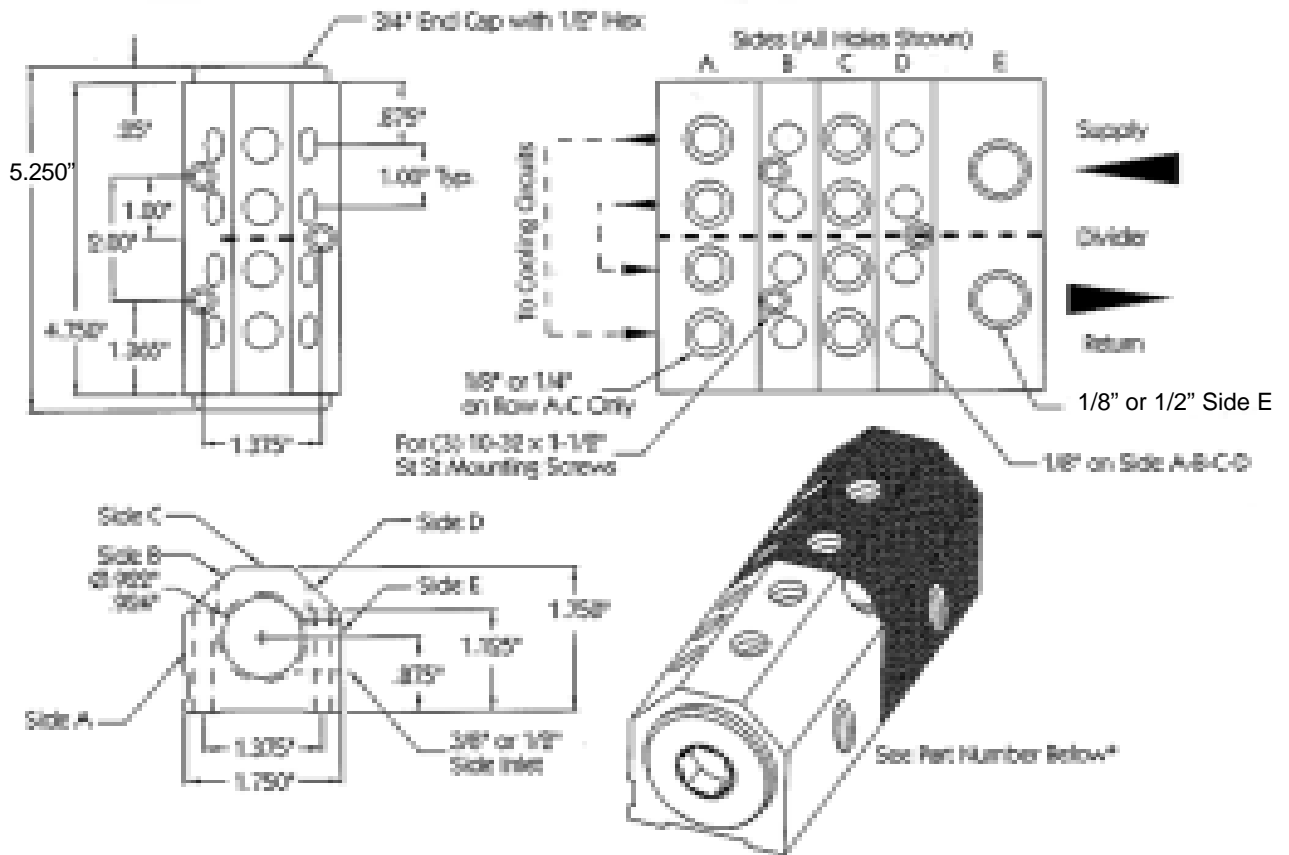
Price includes end cap and stainless steel 1/4" x 20 x 3" mounting screws.
CUSTOM MANIFOLDS QUOTED UPON REQUEST

© 2009 MOLDERS CHOICE, Inc.



24 Hour Service - 7 Days a week
1-800-809-4623
WebSite: www.molderschoice.com • Email: molders@molderschoice.com

3/4" x 5" SIDELINE™ MANIFOLDS



3/4 x 5 SIDELINE

Outgoing Ports					Part Number	Price
Side A In-Out	Side B In-Out	Side C In-Out	Side D In-Out	Side E In-Out		
1/8" Ports	1/8" Ports	1/8" Ports	1/8" Ports			
	Two-Two			3/8"-3/8"	IM3S-5-3/8-B-2-2-1/8-N-R/B	\$87.00
Two-Two	Two-Two			3/8"-3/8"	IM3S-5-3/8-AB-4-4-1/8-N-R/B	\$99.00
	Two-Two		Two-Two	3/8"-3/8"	*IM3S-5-3/8-BD-4-4-1/8-N-R/B	\$99.00
	Two-Two	Two-Two	Two-Two	3/8"-3/8"	IM3S-5-3/8-BCD-6-6-1/8-N-R/B	\$111.00
Two-Two	Two-Two	Two-Two	Two-Two	3/8"-3/8"	IM3S-5-3/8-ABCD-8-8-1/8-N-R/B	\$123.00
	1/4" Ports		1/4" Ports			
	Two-Two			1/2"-1/2"	IM3S-5-1/2-B-2-2-1/4-N-R/B	\$87.00
	Two-Two		Two-Two	1/2"-1/2"	IM3S-5-1/2-BD-4-4-1/4-N-R/B	\$99.00

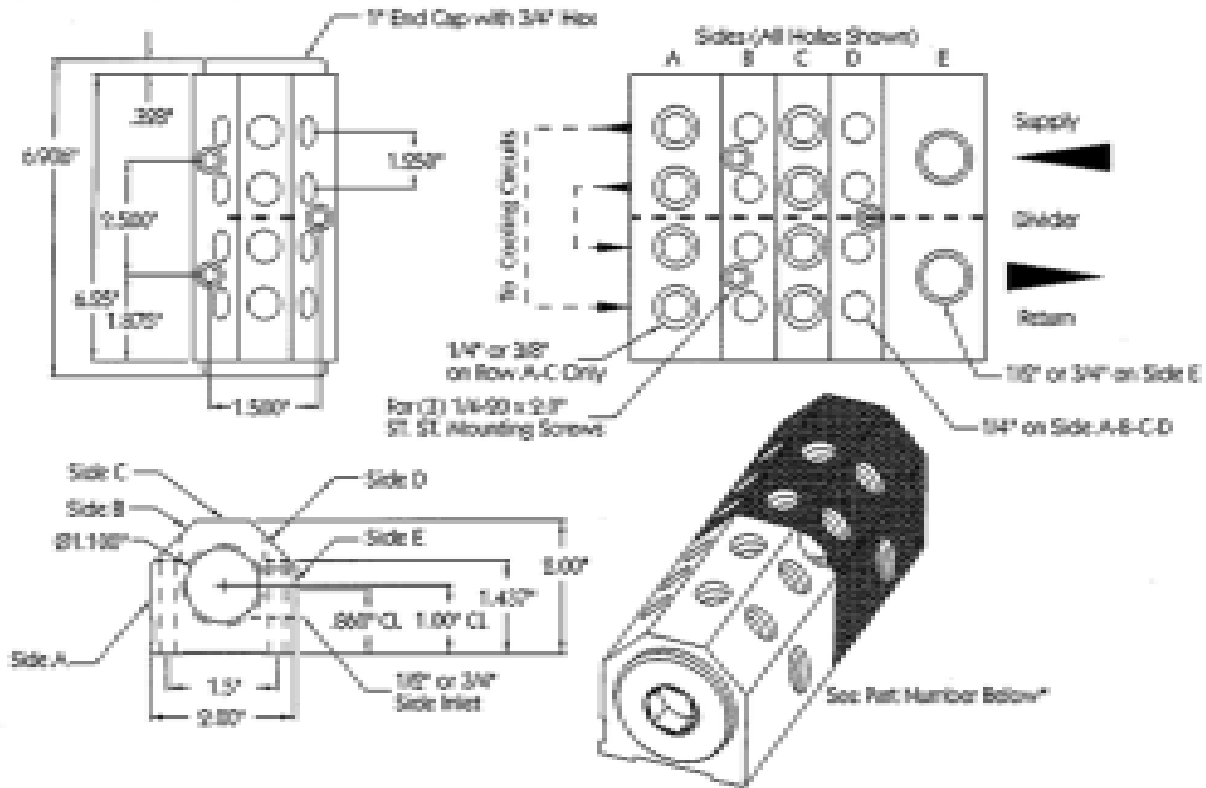
Prices include end caps and (3) 10-32 x 1-1/2" mounting screws

© 2009 MOLDERS CHOICE, Inc.



24 Hour Service - 7 Days a week
1-800-809-4623
 WebSite: www.molderschoice.com • Email: molders@molderschoice.com

1" x 7" SIDELINE™ MANIFOLDS



1 x 7 SIDELINE

Outgoing Ports					Part Number	Price
Side A In-Out	Side B In-Out	Side C In-Out	Side D In-Out	Side E In-Out		
1/4" Ports	1/4" Ports	1/4" Ports	1/4" Ports			
	Two-Two			1/2"-1/2"	IM4S-7-1/2-B-2-2-1/4-N-R/B	\$113.00
Two-Two	Two-Two			1/2"-1/2"	IM4S-7-1/2-AB-4-4-1/4-N-R/B	\$125.00
	Two-Two		Two-Two	1/2"-1/2"	IM4S-7-1/2-BD-4-4-1/4-N-R/B	\$125.00
	Two-Two	Two-Two	Two-Two	1/2"-1/2"	IM4S-7-1/2-BCD-6-6-1/4-N-R/B	\$137.00
Two-Two	Two-Two	Two-Two	Two-Two	1/2"-1/2"	IM4S-7-1/2-ABCD-8-8-1/4-N-R/B	\$149.00
	3/8" Ports		3/8" Ports			
	Two-Two			3/4"-3/4"	IM4S-3/4-B-2-3-8-NR/B	\$113.00
	Two-Two		Two-Two	3/4"-3/4"	IM4S-7-3/4-BD-4-4-3/8-N-R/B	\$125.00

Prices include end caps and (3) 10-32 x 2" mounting screws

© 2009 MOLDERS CHOICE, Inc.



24 Hour Service - 7 Days a week
1-800-809-4623
 WebSite: www.molderschoice.com • Email: molders@molderschoice.com

