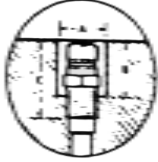
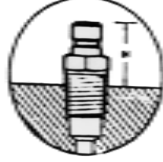


# WATER LINE PLUGS

**FLUSH MOUNTED**



**EXTERNALLY MOUNTED**



MALE (brass)



FEMALE (steel)

*Interchangeable with*

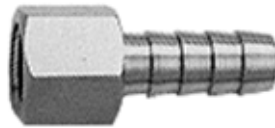
- Jiffy-Tite
- Parker
- Foster
- Rectus (Obac)

PART#	PRICE	NPT	Water pass	A	B	C	D
(all dimensions in inches)							
QC250	\$1.03	1/16"	3/16"	11/16	11/16	1	5/8
QC251	\$ .40	1/8"	1/4"	11/16	11/16	1	5/8
QC252	\$ .55	1/4"	1/4"	27/32	131/6	1-13/16	7/8
QC253	\$ .90	3/8"	1/4"	1	15/16	1-1/4	27/32
QC352	\$ .65	1/4"	3/8"	1	1-3/32	1-7/17	1-1/32
QC353	\$ .80	3/8"	3/8"	1	1-1/8	1-3/16	1-1/16
QC354	\$1.27	1/2"	3/8"	1-3/16	1-1/4	1-9/16	1-7/16
QC554	\$1.40	1/2"	5/8"	1-1/4	1-1/2	1-13/16	1-7/16
QC556	\$2.30	3/4"	5/8"	1-1/2	1-9/19	1-7/8	1-1/2

PART #	PRICE	NPT	Water pass	All plugs for use with coupling#
QC250	\$ .85	1/16"	3/16"	All 200 series
QC251F	\$ .60	1/8"	1/4"	All 200 series
QC252F	\$ .95	1/4"	1/4"	All 200 series
QC253F	\$1.20	3/8"	1/4"	All 200 series
QC351F	\$1.45	1/8"	11/32"	All 300 series
QC352F	\$ .80	1/4"	3/8"	All 300 series
QC353F	\$1.10	3/8"	3/8"	All 300 series
QC354F	\$2.00	1/2"	3/8"	All 300 series
QC554F	\$1.75	1/2"	5/8"	All 500 series
QC556F	\$3.00	3/4"	5/8"	All 500 series

All the above plugs are designed short, so they may be recessed below the mold surface to avoid damage during mold change or storage.

## BARB TYPE FITTINGS



STANDARD MALE (Require hose clamps)			
PART#	PRICE	NPT (in)	Hose (in)
BM1	\$1.66	1/8	1/4
BM2	\$1.48	1/8	3/8
BM3	\$1.68	1/4	1/4
BM4	\$1.68	1/4	3/8
BM5	\$1.87	1/4	1/2
BM6	\$1.95	3/8	1/4
BM7	\$1.95	3/8	3/8
BM8	\$2.20	3/8	1/2
BM9	\$2.33	1/2	3/8
BM10	\$2.40	1/2	1/2
BM11	\$2.36	1/2	3/8
BM12	\$3.09	1/2	3/4
BM13	\$4.50	1	1
BM14	\$3.45	3/4	3/4
BM15	\$3.24	3/4	1
BM16	\$6.55	1	3/4
BM17	\$4.50	3/4	1/2

STANDARD FEMALE (Require hose clamps)			
PART#	PRICE	NPT (in)	Hose (in)
BF1	\$ 1.70	1/4	1/4
BF2	\$ 1.70	1/4	3/8
BF3	\$ 2.03	3/8	3/8
BF4	\$ 2.08	3/8	1/2
BF5	\$ 2.39	1/2	1/2

HOSE SPLICE (push-on style)		
PART#	PRICE	NPT
PBS1	\$1.68	1/4
PBS2	\$1.72	3/8
PBS3	\$2.18	1/2

PUSH-ON STYLE			
PART#	PRICE	NPT (in)	Hose (in)
PBF1	\$1.92	1/4	1/4
PBF2	\$2.33	3/8	3/8
PBF3	\$2.99	1/2	1/2

SPARE VITON WASHERS	
PART#	PRICE
VW200	\$ .80 ea.
VW300	\$1.12ea.
VW500	\$1.00 ea.

PUSH-ON STYLE (No clamps required)			
PART#	PRICE	NPT (in)	Hose (in)
PBM1	\$1.75	1/4	1/4
PBM2	\$1.75	1/4	3/8
PBM3	\$2.14	3/8	3/8
PBM4	\$2.36	1/2	3/8
PBM5	\$2.14	3/8	1/2
PBM6	\$2.15	1/4	1/2
PBM7	\$2.45	1/2	1/2
PBM8	\$3.40	1/2	3/4
PBM9	\$3.60	1/8	1/4
PBM10	\$3.50	1/2	3/4
PBM11	\$9.98	1	1

## THREAD SEALANT TAPE

- Low cost
- Seals against water, oil, gas, air leakage

PART#	WxL	MILL	PRICE
TST520	1/2" x 520"	3.5	\$2.05 each



© 2018 MOLDERS CHOICE, Inc.



24 Hour Service - 7 Days a week  
**1-800-809-4623**  
 WebSite: [www.molderschoice.com](http://www.molderschoice.com)    E-mail: [molders@molderschoice.com](mailto:molders@molderschoice.com)

# Brass PIPE EXTENSIONS

- Extension Plugs are compatible with all major mold connection systems
- One piece construction for fast assembly and positive removal
- End threads tapered for standard NPT pipe assembly

## 200 SERIES

1/4" nominal  
water passage



PART #	Length	NPT	PRICE	PART #	Length	NPT	PRICE	PART #	Length	NPT	PRICE
QC250X2.5	2-1/2	1/16"	\$2.85	QC251X13	13	1/8"	\$7.67	QC253X2.5	2-1/2	3/8"	\$3.55
QC250X4	4	1/16"	\$3.41	QC252X2.5	2-1/2	1/4"	\$2.63	QC253X4	4	3/8"	\$4.00
QC251X2.5	2-1/2	1/8"	\$2.46	QC252X4	4	1/4"	\$2.98	QC253X5.5	5-1/2	3/8"	\$4.75
QC251X4	4	1/8"	\$2.78	QC252X5.5	5-1/2	1/4"	\$3.80	QC253X7	7	3/8"	\$5.70
QC251X5.5	5-1/2	1/8"	\$3.53	QC252X7	7	1/4"	\$4.55	QC253X8.5	8-1/2	3/8"	\$6.60
QC251X7	7	1/8"	\$3.90	QC252X8.5	8-1/2	1/4"	\$5.35	QC253X10	10	3/8"	\$7.45
QC251X8.5	8-1/2	1/8"	\$4.62	QC252X10	10	1/4"	\$5.95	QC253X11.5	11-1/2	3/8"	\$8.45
QC251X10	10	1/8"	\$5.95	QC252X11.5	11-1/2	1/4"	\$6.68	QC253X13	13	3/8"	\$9.50
QC251X11.5	11-1/2	1/8"	\$6.68	QC252X13	13	1/4"	\$7.67				

## 300 SERIES

3/8" nominal  
water passage



PART #	Length	NPT	PRICE	PART #	Length	NPT	PRICE	PART #	Length	NPT	PRICE
QC350X2.5	2-1/2	1/16"	\$3.00	QC352X5.5	5-1/2	1/4"	\$3.72	QC353X11.5	11-1/2	3/8"	\$9.50
QC350X4	4	1/16"	\$3.60	QC352X7	7	1/4"	\$4.30	QC353X13	13	3/8"	\$10.50
QC351X2.5	2-1/2	1/8"	\$2.65	QC352X8.5	8-1/2	1/4"	\$5.10	QC354X2.5	2-1/2	1/2"	\$4.60
QC351X4	4	1/8"	\$3.05	QC352X10	10	1/4"	\$5.75	QC354X4	4	1/2"	\$6.50
QC351X5.5	5-1/2	1/8"	\$3.72	QC352X11.5	11-1/2	1/4"	\$6.50	QC354X5.5	5-1/2	1/2"	\$7.50
QC351X7	7	1/8"	\$4.30	QC352X13	13	1/4"	\$7.50	QC354X7	7	1/2"	\$8.50
QC351X8.5	8-1/2	1/8"	\$5.30	QC353X2.5	2-1/2	3/8"	\$3.44	QC354X8.5	8-1/2	1/2"	\$10.50
QC351X10	10	1/8"	\$5.90	QC353X4	4	3/8"	\$3.80	QC354X10	10	1/2"	\$10.54
QC351X11.5	11-1/2	1/8"	\$6.45	QC353X5.5	5-1/2	3/8"	\$4.38	QC354X11.5	11-1/2	1/2"	\$12.50
QC351X13	13	1/8"	\$7.50	QC353X7	7	3/8"	\$5.26	QC354X13	13	1/2"	\$13.80
QC352X2.5	2-1/2	1/4"	\$2.63	QC353X8.5	8-1/2	3/8"	\$6.10				
QC352X4	4	1/4"	\$2.98	QC353X10	10	3/8"	\$7.75				

## 500 SERIES

1/2" nominal  
water passage



PART #	Length	NPT	PRICE	PART #	Length	NPT	PRICE	PART #	Length	NPT	PRICE
QC553X2.5	2-1/2	3/8"	\$3.85	QC553X11.5	11-1/2	3/8"	\$9.71	QC554X8.5	8-1/2	1/2"	\$8.60
QC553X4	4	3/8"	\$4.35	QC553X13	13	3/8"	\$10.75	QC554X10	10	1/2"	\$10.20
QC553X5.5	5-1/2	3/8"	\$5.12	QC554X2.5	2-1/2	1/2"	\$4.40	QC554X11.5	11-1/2	1/2"	\$11.50
QC553X7	7	3/8"	\$5.62	QC554X4	4	1/2"	\$5.00	QC554X13	13	1/2"	\$13.00
QC553X8.5	8-1/2	3/8"	\$7.40	QC554X5.5	5-1/2	1/2"	\$6.50				
QC553X10	10	3/8"	\$8.55	QC554X7	7	1/2"	\$7.30				

©2014 MOLDERS CHOICE, Inc.



24 Hour Service - 7 Days a week

**1-800-809-4623**

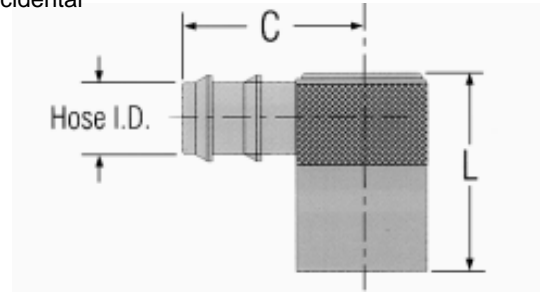
WebSite: [www.molderschoice.com](http://www.molderschoice.com) • Email: [molders@molderschoice.com](mailto:molders@molderschoice.com)

# QUICK COUPLER WATER JUMPERS

**Maintains full flow rate of hose used.**



Coupler sleeve twists to lock, preventing accidental disconnect.

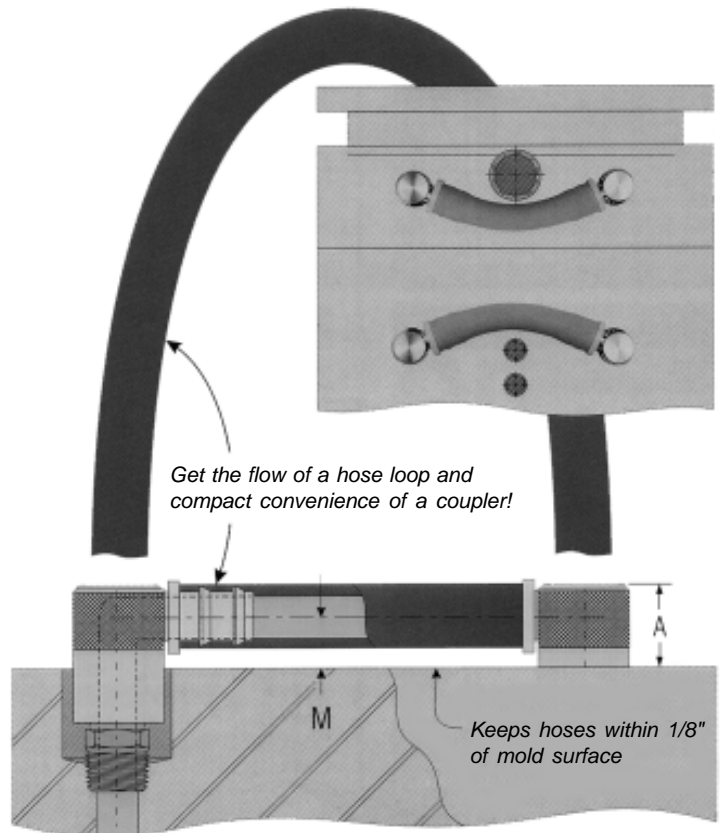


For use with Push-Lok hose, no hose clamps are required

PART #	Fits Plug Series	Hose I.D.	L	C	M	A	PRICE
<b>WJ200-4</b>	200	1/4"	1"	1-1/4"	3/8"	5/8"	<b>\$6.30</b>
<b>WJ200-5</b>	200	5/16"	1"	1-1/4"	3/8"	5/8"	<b>\$6.30</b>
<b>WJ200-6</b>	200	3/8"	1"	1-1/4"	3/8"	5/8"	<b>\$6.30</b>
<b>WJ300-6</b>	300	3/8"	1-7/16"	1-9/16"	1/2"	7/8"	<b>\$7.40</b>
<b>WJ300-8</b>	300	1/2"	1-7/16"	1-9/16"	1/2"	7/8"	<b>\$7.40</b>

Oversized and unrestricted flow path maintains **full flow rate** of hose used.

- Eliminates bulky hose loops.
- Compact design neatly and safely holds cooling lines close to the mold.
- Stocks only one part number for any hose size. No special tubes or length restriction systems.
- Compatible with all major mold connection systems.
- Unlimited installation options.
- Fits around obstacles, and installs in compact spaces.
- Viton Seals provide for temp to 400°F.
- All brass and stainless steel construction.



© 2009 MOLDERS CHOICE, Inc.



24 Hour Service - 7 Days a week

## 1-800-809-4623

WebSite: [www.molderschoice.com](http://www.molderschoice.com) • Email: [modlers@molderschoice.com](mailto:modlers@molderschoice.com)