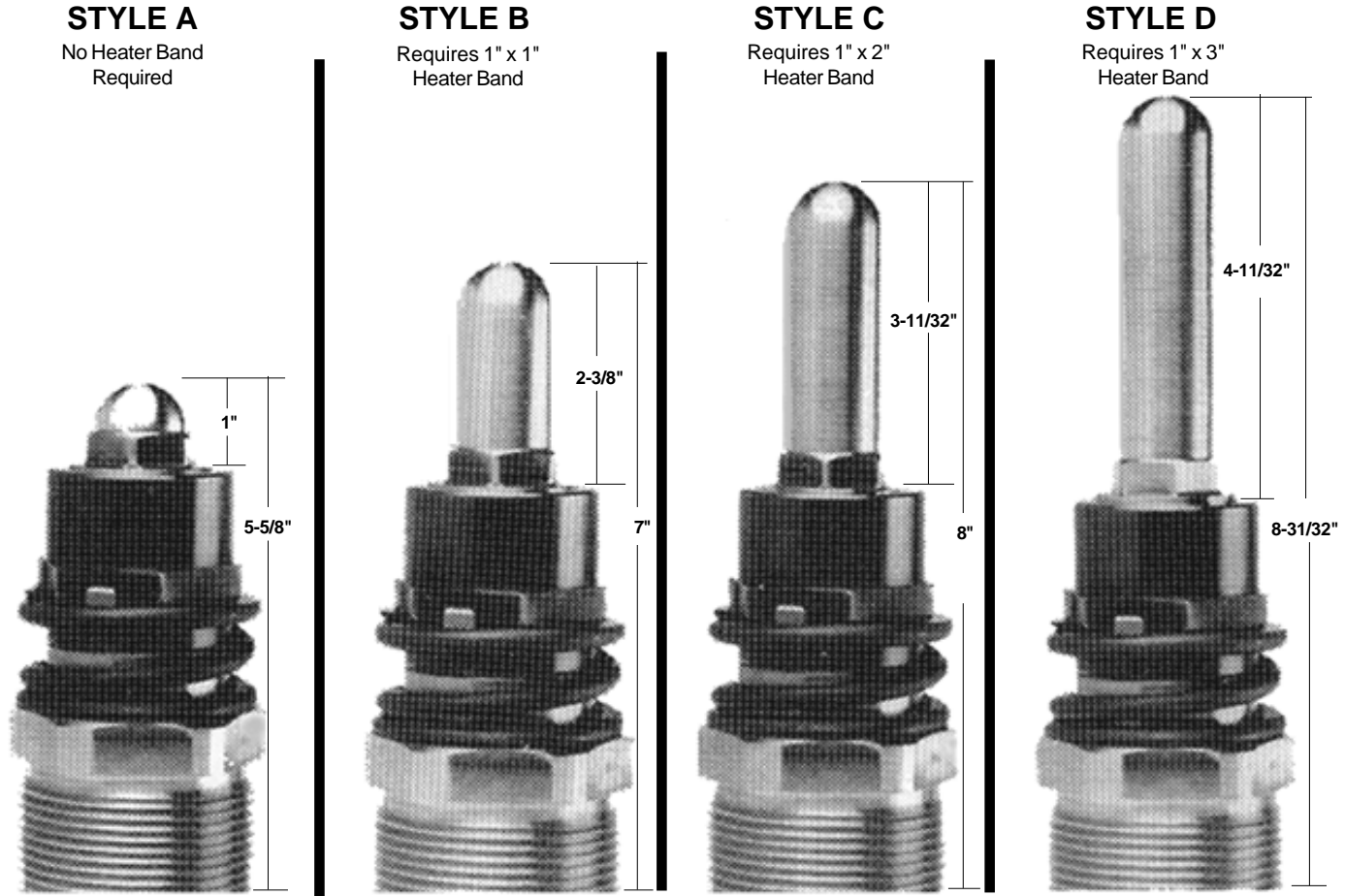
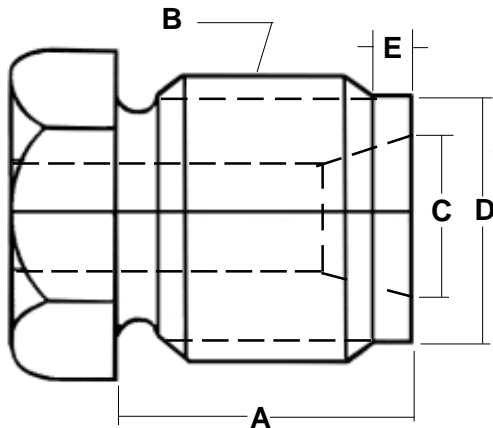


# FUCHSLOCHER SHUT-OFF NOZZLES



STYLE A	STYLE B	STYLE C	STYLE D
<b>\$1680.00</b>	<b>\$1720.00</b>	<b>\$1790.00</b>	<b>\$1800.00</b>
Extra Tip P/N FTA <b>\$140.00</b>	Extra Tip P/N FTB <b>\$174.00</b>	Extra Tip P/N FTC <b>\$208.00</b>	Extra Tip P/N FTD <b>\$243.00</b>

**Body Requires 2" x 1" Heater Band: P/N HBS067 (120V) or HBS068 (240V)**



**TO ORDER: PLEASE ADVISE FOLLOWING**

- A. Thread Length (includes relief)
- B. Thread Size
- C. Rear Opening Dia.
- D. Relief Diameter
- E. Relief Length
- F. Radius (1/2" or 3/4")
- G. Orifice (1/8", 5/32", 3/16", or 1/4")
- H. Tip Style (overall length)  
(All tips are nylon design)
- I. Machine Make and Model

© 2009 MOLDERS CHOICE, Inc.



24 Hour Service - 7 Days a week

## 1-800-809-4623

WebSite: [www.molderschoice.com](http://www.molderschoice.com) • Email: [molders@molderschoice.com](mailto:molders@molderschoice.com)