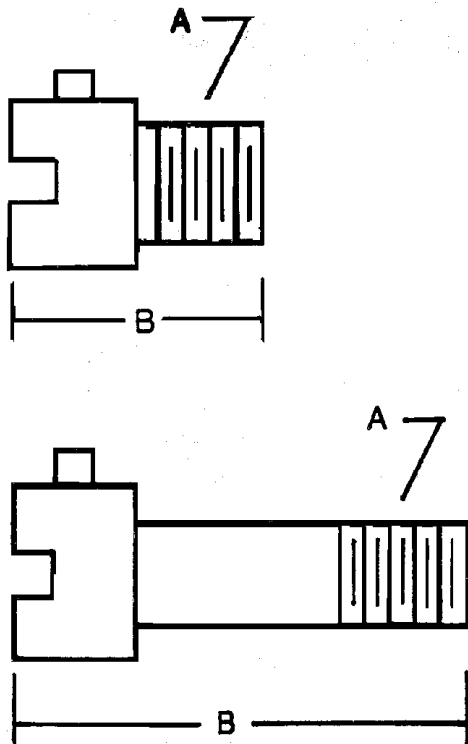


# HEATER BAND & THERMOCOUPLE ACCESSORIES



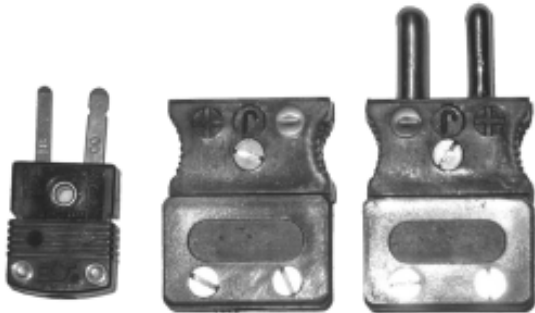
## ADAPTERS

PART #	Thread size (A)	Length (B)	PRICE
TP875-1	1/8 -27npt	7/8"	\$1.80
TP1250-1	1/8-27npt	1-1/4"	\$2.30
TP1500-1	1/8 -27npt	1-1/2"	\$2.40
TP2500-1	1/8 -27npt	2-1/2"	\$2.81
TP875 -2	3/8-24nf	7/8"	\$3.50
TP1500-2	3/8-24nf	1-1/2"	\$6.50
TP2500-2	3/8-24nf	2-1/2"	\$6.50
TP1250-3	10mm-1.5mm	1-1/4"	\$7.30
TP2250 3	10mm-1.5mm	2-1/4"	\$8.80
TP1250-4	12mm-1.75mm	1-1/4"	\$10.00
TP2250-4	12mm-1.75mm	2-1/4"	\$12.00

## Thermocouple WIRE

PART #	DESCRIPTION	PRICE
TWJ	Type-J 24 GAUGE -SOLID GLASS BRAID	\$.53/FT
TWK	Type-K 24 GAUGE SOLID -GLASS BRAID	\$.43/FT

## Thermocouple PLUGS



PART #	Description	PRICE
PPMJ	Polarized Male Plug Type J	\$4.00
PPFJ	Polarized Female Plug Type J	\$4.00
MPJ-BK	Type J Minim Plug - Black	\$2.50
1210-K	Thermocouple Female Mini Jack K-Type	\$4.30
1260-K	Thermocouple Male Mini Plug K-Type	\$4.30

© 2018 MOLDERS CHOICE, Inc.



24 Hour Service - 7 Days a week

# 1-800-809-4623

WebSite:www.molderschoice.com

E-mail:molders@molderschoice.com